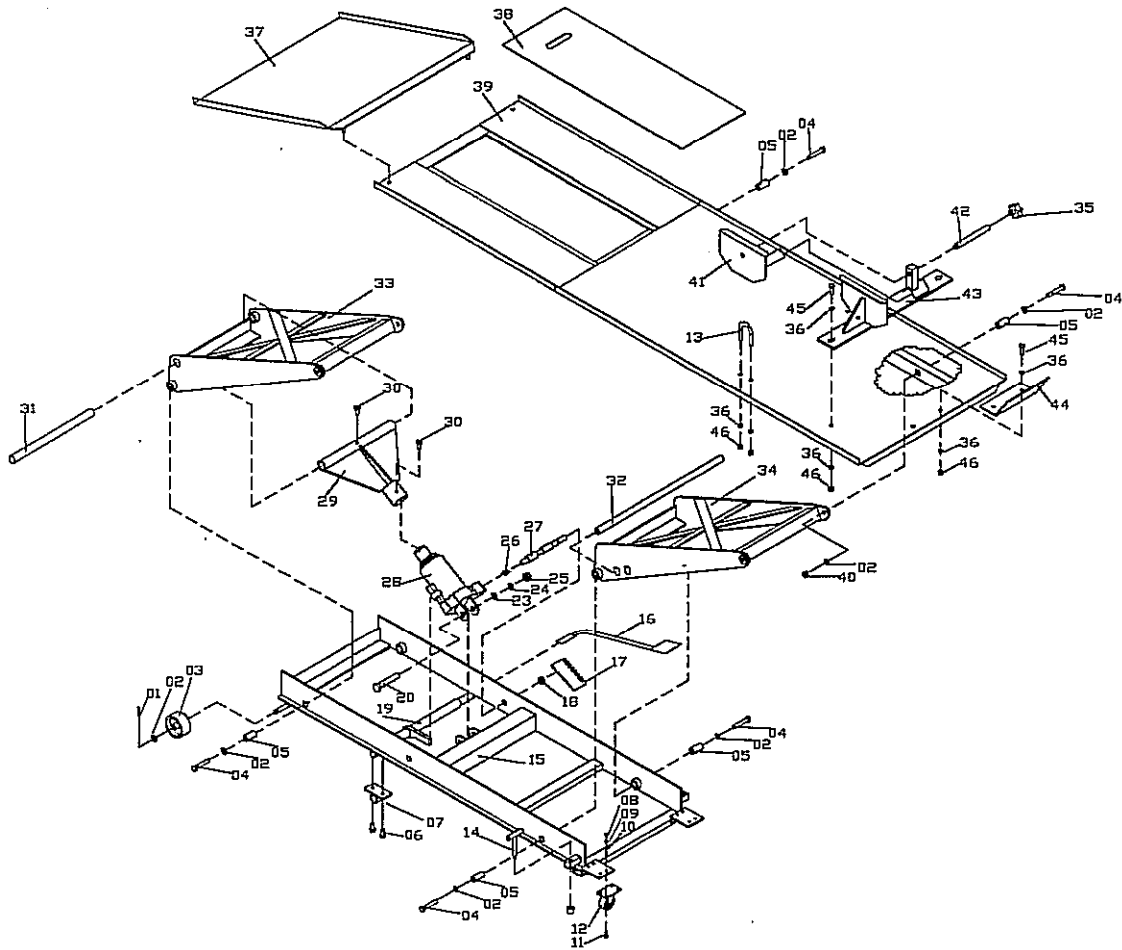


# 1000LBS Hydraulic Motorcycle Lift



PARTS NEEDED		
PART	DESCRIPTION	QTY
1	Pin	2
2	Ø12 Washer	18
3	Front wheel	2
4	Bolt M12x60	8
5	Liner tube	4
6	Bolt M8x20	2
7	Plate	1
8	Nut M6	8
9	Ø6 Washer	8
10	Ø6 Spring Washer	8
11	Bolt M6x16	8
12	Caster	2
13	'U' Bolt	2
14	Adjusting screw	2
15	Base assy	1
16	Lift foot pdeal	1
17	Footplate	1
18	Nut M16	1
19	Controller	1
20	Bolt M16x85	1
23	Ø16 Washer	1
24	Ø16 Spring Washer	1

PARTS NEEDED		
PART	DESCRIPTION	QTY
25	Nut M16	1
26	Spring	1
27	Release valve spindle	1
28	Hydraulic Pumpe	1
29	Jockey	1
30	Bolt M10x16	2
31	Pin	1
32	Locking Bar	1
33	Lifting arm	1
34	Lifting arm	1
35	Handle	1
36	Ø10 Washer	12
37	Ramp	1
38	Sliding plate	1
39	Plattform	1
40	Nut M12	4
41	Left side vice	1
42	Bolt	1
43	Right side vice	1
44	Baffle plate	1
45	Bolt M10x25	4
46	Nut M10	4